



Thursday 14th February 2019

This week at Braunstone Community Primary School...

"Me and the kids loved it! The food was good and the room looked fab!"

"Today was amazing! Thank you for having us"



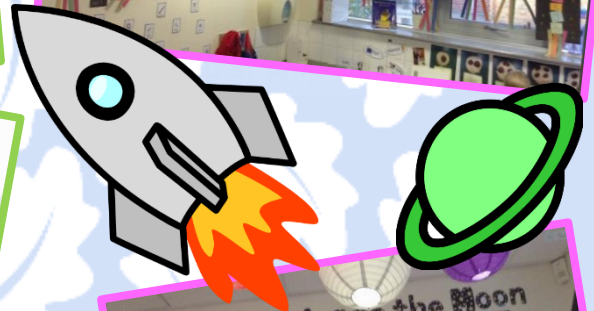
Happy Chinese New Year!
2019-Year of the Pig
Last week we celebrated by hosting a Chinese lunch and invited parents/carers of F2, Year 1 & 2! Thank you to everybody that came along!



Marvellous Maths!



Year 2 had an amazing time on their trip to Tamworth Castle! We've even written some recounts about our day!



Tamworth Castle



Who can guess which story Year 2 have been working on?
Clue: 'All the better to see you with!'

Look at F1's fantastic rocket display! The children have loved making their rockets and have even flown to the moon!

Children are provided with all of the resources they require by school. Please remind your children to avoid bringing any valuables/ toys/ games/ things from home that could be broken or lost.
Thank you



Road Safety

Please speak to your children about the importance of road safety when out and about in the community and on the way to and from school.

For more information, have a look at:
<https://www.think.gov.uk>



Half Term

The last day of term is Friday 15th February. School will re-open on Monday 25th February. 8am for breakfast club and classrooms open from 8.40am.

February Half Term



Follow us on Twitter to find out more about our school! @braunstone_cps



School Uniform

It is lovely to see the children looking so smart in their uniforms and black shoes. If you need additional uniform, please come to the main school office. Also, please remember to mark all clothing with your child's name making it easier to return if it gets misplaced.

- Grey trousers
- Grey skirt
- White polo-shirt
- Navy blue school sweatshirt
- Navy blue school cardigan
- Black sensible flat shoes
- Plain grey/black or navy blue tights
- Blue and white checked summer dress
- Plain white/grey/black/navy blue socks



Please write your child's name and class in all of their uniform including their PE kit.

Outstanding school meal debts

Please ensure you are ordering and paying for your child's school meals on Monday of every week. School meals are £2 a day/ £10 a week.

Any outstanding debt should be cleared as soon as possible.

Payment can be made online or at the school office.



Adverse Weather Conditions

Should it be necessary at any time this winter to close the school due to the effects of adverse weather conditions, particularly heavy snow fall, we will inform you by text message.

You can also check by using the following:

- BBC Radio Leicester on 104.9FM
- www.bbc.co.uk/leicester
- www.leicester.gov.uk/education and look for emergency school closures.

These are all updated regularly.

You can of course also try to contact the school on 0116 285 8130.

The decision to close the school would not be taken lightly and priority as always is given to the children's health and safety.

Diary of Events

After school clubs- Monday 25th

February- Friday 12th April.

February Half Term: 18th-22nd

February.

(School will close on Friday 15th and re-open on Monday 25th)

Parents Evening Feb 2019-Weds 27th & Thurs 28th February for Years 1-6 only (separate letter to follow). F1 and F2 dates to follow.

Child protection and children at risk

Child protection means protecting children from physical, emotional, sexual abuse or neglect. It also means helping children to grow up into confident, healthy and happy adults. If you are concerned about the safety and welfare of a child in Leicester, please contact us by calling 0116 454 1004 (24 hour service) or the police on 0116 222 2222. You can also visit our customer services centre on 91 Granby Street LE1 6FB to call us from a free telephone.



Attendance

Whole school attendance should be 96.4% or above as set by the Government. We have high expectations for all our pupils and have set a school and individual target of 97%. Our current attendance year-to-date is 95.57%. We are delighted to see that it is improving, with improved punctuality and attendance this will continue to increase and help us to continue to reach our target. We know that the more children come to school, the more they learn and the more successful they will be at school.

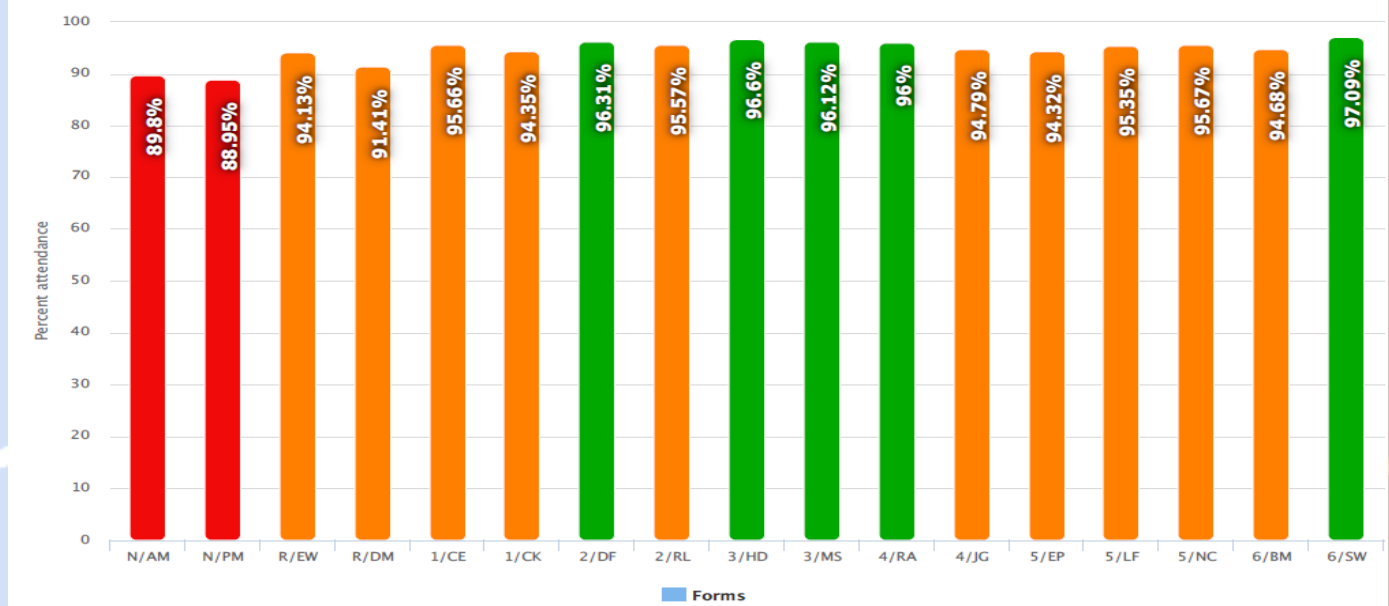
Winners of the Best Class Trophy

Phase	W/E 08/02	W/E 15/02
EYFS	RDM 92%	RDM 92%
Yr 1 and 2	2DF 98.71%	1CE 98%
Yr 3 and 4	3HD 98.67%	4JG 100%
Yr 5 and 6	6SW 99.33%	5LF 99%



ATTENDANCE
MATTERS

Attendance By Form between 27/08/2018 and 13/02/2019



We realise that from time to time it may be necessary for you to keep your child off from school. In order to record your child's absence correctly, we would ask that you advise the school by:

Ringing the school office on the first day of absence on 0116 2858130 or inform the class teacher if you bring other siblings to school. If it is necessary to keep your child off for more than one day please continue to keep us informed.

If we receive no communication from you, we are legally required to record a mark of unauthorised absence; this could result in the Education Welfare Office being contacted.

Medical appointments

Please, where possible, avoid routine medical appointments within school time. Every second of learning counts!

If your child is absent for a medical reason you will need to provide medical evidence e.g. appointment card/clinic letter or appointment confirmation text sent by the NHS.

